

SUSTAIN



Habitat for Humanity®

East Bay/Silicon Valley

2022 ANNUAL REPORT

A preserved Heritage Oak tree at
Esperanza Place in Walnut Creek

LETTER FROM THE LEADERSHIP

Sustainability has always been built into Habitat. It is not a fad attached to the latest green technology, but one of our core principles—one that has guided us in many more ways since our founding.

At its heart, sustainability is about vision—and what it takes to achieve it. It is a recognition of the fact that our decisions today ripple forward, and a challenge to make the choices that result in the future we want to see.

Habitat is clear-eyed about that vision: a world where everyone has a decent place to live. We are committed to making the choices that make our vision a reality.

This means keeping sustainability at the forefront in a myriad of ways. When we contemplate the future of our planet, we opt to ensure it thrives. When we look to the future of our communities, we make choices that strengthen their fabric and nurture opportunity for each resident. And when we consider our own ability to serve, we choose financial sustainability and mindful stewardship of donor dollars—so we can see maximum impact for generations to come.

So, you'll find sustainability in many of our decisions. When we install solar panels or plan the next innovation in climate-smart building. When we grow access to homeownership, especially among those left out by systemic disenfranchisement. When we keep our neighborhoods intact and our neighbors in their homes. When we serve—more people, in more ways. With these actions, we move closer to that vision of an equitable and abundant future—for our planet, our communities, and the people who live here.

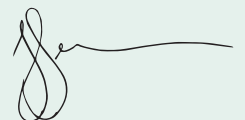
Sustainability calls to us from tomorrow, and our response must come today. Today, we must choose to build a society that exemplifies justice and opportunity, so that all of us can enjoy its benefits for untold tomorrows.

We commit to that future with our work toward it. And when you support Habitat, your engagement with us brings that vision closer. Thank you for embracing our vision, for believing in it, and for being a part of our journey toward it.

In partnership,



Vince Salinas
Board Chair



Janice Jensen
President and CEO



SUSTAIN
Strengthen, support,
and uphold our planet,
communities, and neighbors

SUSTAINABLE PLANET

Environmental sustainability is an essential value of ours. It's more than the principles we've adopted—from installing our first solar panels 20 years ago, to building our Zero Net Energy neighborhood in Walnut Creek today. Sustainability is, and always has been, built into us.

CLIMATE-SMART CONSTRUCTION

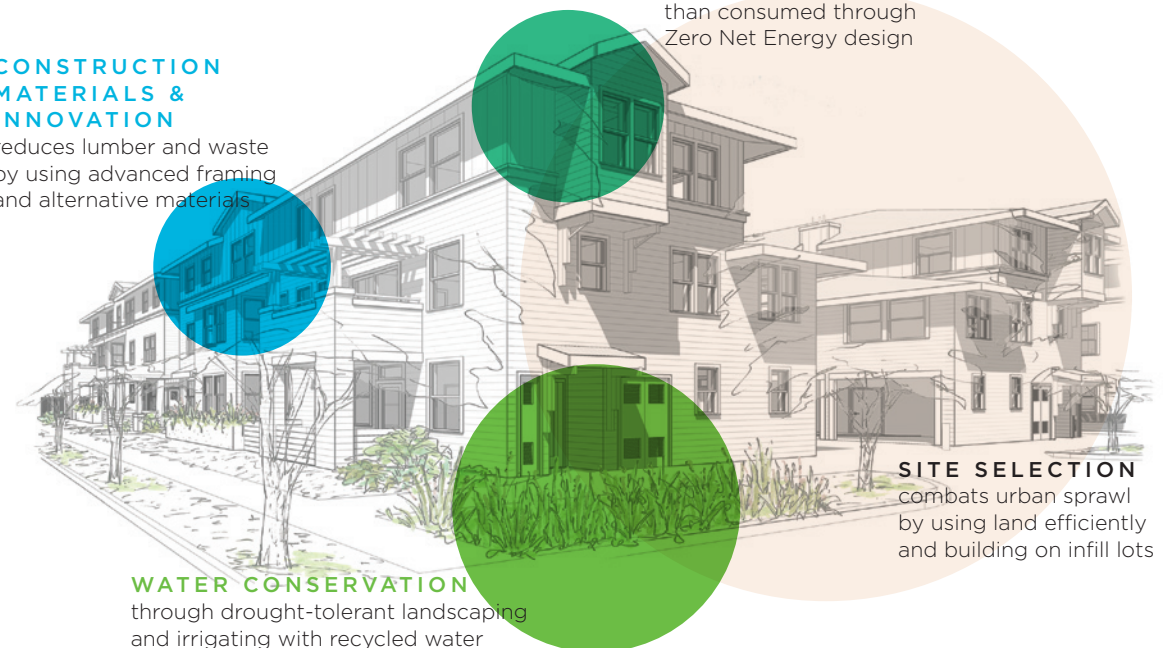
begins long before breaking ground. You can spot a green-built Habitat home easily from the rooftop photovoltaic arrays. But our sustainable building efforts go far beyond the solar panel. We approach each housing development considering a few key factors: site selection, construction materials and innovations, energy efficiency and production, and water conservation. It all comes down to whole-systems thinking that centers the health of our homeowners, our local ecosystem, and our planet.

CONSTRUCTION MATERIALS & INNOVATION

reduces lumber and waste by using advanced framing and alternative materials

ENERGY EFFICIENCY & PRODUCTION

produces more energy than consumed through Zero Net Energy design



WATER CONSERVATION

through drought-tolerant landscaping and irrigating with recycled water

SITE SELECTION
combats urban sprawl by using land efficiently and building on infill lots



Learn more about our climate-smart construction practices at HabitatEBSV.org/Sustainable-Construction

*... because of our solar panels
and because our home was built
so efficiently, our utility bills are
considerably lower. When we talk
with our friends, their bills are so
high in the summer.*

-SARA, HABITAT HOMEOWNER
MARTINEZ, CA

RESTORE

Sustainability is at the core of ReStore. Reselling quality home improvement goods gives them a second life, opens a vital funding stream to sustain Habitat's work, and keeps more than 10 million pounds of usable materials out of landfills every year.

We opened our first ReStore 20 years ago, and we have grown both in size—with three Bay Area stores—and impact. Through partnerships with CalRecycle and others, we now take sustainability further by diverting more materials like wood waste, mattresses, and paint, while improving our infrastructure and educating our community.



NEXT INNOVATIONS



CARBON CAPTURE

We continue to push the envelope on sustainable, affordable housing and are piloting the nation's first carbon-negative homes in San Leandro. Using a groundbreaking technology to encapsulate carbon within concrete, these homes actually offset the carbon used in their production, and then some.



HOME ELECTRIFICATION

We're also launching HEEP—the Home Electrification Equity Project, made possible through a grant from ICLEI - Local Governments for Sustainability with funding from Google.org. HEEP will pilot a new model to help four East Bay cities (Berkeley, Fremont, Hayward, and Oakland) identify homeowners with limited incomes who are ideal candidates for holistic electrification upgrades, solar power, and other key repairs. HEEP will prevent displacement, cut energy costs, support health and safety, and strengthen our regional energy infrastructure.



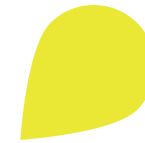
SCALING THE TECHNOLOGY

Both of these innovations will serve our neighbors, and also form a model to be scaled nationwide.

SUSTAINABLE COMMUNITY

Our whole-systems thinking goes beyond the environment to community sustainability. The choices we make today build the community we want in the future. And we choose a future with robust neighborhoods, where people have stability, opportunity, and equity, and where neighbors feel connected to the social fabric.

COMMUNITY-CENTERED APPROACH



A COMMUNITY IS SUSTAINABLE WHEN EACH PART IS WOVEN TOGETHER, INTERCONNECTED, SUPPORTING EACH OTHER—AND EACH RESIDENT.

When Habitat approaches homebuilding, we weave our services into the community's fabric. Long before we break ground, we keep community at the forefront as we consider where to build, how our work contributes to the neighborhood's existing legacy, and the way Habitat homeowners can carry that legacy forward.

Community-centered design means we gather community feedback, design homes that integrate seamlessly with the surrounding area, and find ways to augment the amenities a neighborhood has to offer. Whether we can preserve existing housing, build near the mass transit people rely on, or transform an infill lot to revitalize a neighborhood—we design today for a community that will remain strong tomorrow.

PRESERVING TREES

maintains neighborhood character, offers passive cooling, and contributes to water conservation

COMMUNITY-FOCUSED DESIGN

blends color and style with the existing neighborhood aesthetic

SPACIOUS COMMUNAL AREAS

with courtyards, benches, and playscapes provide residents places to gather and play

TRANSIT-ORIENTED SITES

with access to transit, EV charging stations, and bike lockers help link residents to the larger community with a smaller footprint

We want residents to enjoy the spaces we create, feel more connected to their community, and live better lives. We want our addition to the community landscape to make the sum greater than our individual part—and build into the community's future.



I want the place where I live to be a safe place for my kids, myself, for other people. Knowing your neighborhood is the place where that begins.

—AMNA, HABITAT HOMEOWNER
CUPERTINO, CA



PRESERVING HOMES & PREVENTING DISPLACEMENT

Our Home Preservation Program preserves more than homes—it keeps families and communities together.

The critical repairs and improvements we make keep homeowners with limited incomes safe and healthy in their homes. Where they can age in place. Stay firmly rooted in their community. And stay in the home they love. The affordable housing we currently have—and the social fabric of our neighborhoods—are protected for generations to come.

A VETERAN who established a home in the Bay Area decades ago can stay in his community



A WIDOW whose husband recently passed can stay rooted in the home they shared

A HOME that's the family legacy remains a safe gathering place for generations

A MAN with a serious respiratory condition can breathe easier with an upgraded HVAC system

WE WANT TO BUILD MORE COMMUNITIES THAT TELL STORIES LIKE THESE.

HOUSING FOR ALL

At Habitat, we believe that everyone in a community should have decent, affordable, stable housing regardless of their income. Yet, one in five Californians spends over half their income on housing, while the state's supply of affordable homes continues to decline.

This is why we advocate. For policy and systemic change that eliminates barriers to adequate, affordable housing. For a robust housing supply with affordable options for everyone. This year, the only state funding program for affordable ownership housing production, CalHome, was secured in the state budget for the first time. This \$350 million in vital funding is the result of coalition building and thousands of mobilized advocates.

Housing for all requires all of us. When we come together to advocate, we can build the sustainable community we want to see.

SUSTAINABLE PEOPLE

We preserve our planet so that future generations have healthy and abundant resources. We build robust communities so that neighbors can keep planting deep roots and living fruitful lives.

Everything comes back to people. Sustainability demands we ask, what world do we want to live in? We choose a future in which all people can thrive.

EQUITY THROUGH HOUSING

The future we envision can only come to pass if we focus on equity—ensuring all people have the access and opportunity to reach their potential, especially those most disadvantaged by centuries of structural racism and disinvestment in communities of color.

At Habitat, that access and opportunity start with safe, decent, affordable housing, and families reap the benefits that come along with it—improved health, financial, and academic outcomes, and the ability to build generational wealth.

Equity is the way forward. A sustainable future depends on everyone having access to the resources and benefits of our society, and the opportunity to build upon them.



HEALTH
70% of Habitat homeowners reported **improved health** after move-in



FINANCIAL
Families with at least \$10K in savings **more than doubled**



ACADEMIC
58% increase in undergraduate degrees for adults
57% increase in master's degrees



GENERATIONAL
The number of families able to save for college **increased fivefold** after move-in

45% of Habitat kids exceeded their parents' educational level

HOUSING & FINANCIAL COUNSELING

In addition to building and preserving affordable ownership housing, we serve the most people every year through our Housing and Financial Counseling Program. The ability to thrive starts with a solid financial foundation—financial wellness and economic empowerment open the door to homeownership and beyond. Through counseling, we have helped thousands to prepare for a home purchase, repair credit, knock down debt, start anew after hardship, build security, and lay the foundation for their kids. There are as many unique circumstances as there are clients, and as many futures they aim to build—and we offer the tools, support, and education to choose that future, today.



I'll never forget. Me and the kids came home, and nothing was set up. We were all on the floor. But it was the best night of sleep ever.

-ROSE, HABITAT HOMEOWNER
SAN PABLO, CA

Rose has a list of life goals folded up in her wallet, an eye always on the future. She's newly married, just moved her youngest children into their dorms for their first year of college, and next year she looks to check two more items off of that list: her oldest son's graduation from college, and her own master's degree.



EIGHT YEARS AGO, SHE ACCOMPLISHED A BIG GOAL, ONE THAT MADE A LOT OF OTHER GOALS FEEL MORE WITHIN REACH—HOMEOWNERSHIP.

Before that, the present had loomed much larger than the future, with climbing rent, single parenting, and an untenable living situation making her feel like she was “drowning.” Becoming a homeowner through Habitat—and the Housing and Financial Counseling Program that helped her achieve it—shifted the balance.

She felt the shift the moment she officially became a homeowner, Thanksgiving Day of 2014. That night, she says, “I’ll never forget. Me and the kids came home, and nothing was set up yet. We were all on the floor. But it was the best night of sleep ever.”

Affordable homeownership has transformative power. In a safe, healthy, and affordable home, Habitat homeowners can become the agents of their own transformation—creating something that will sustain generations to come.



BY THE NUMBERS

We sustain our planet, our communities, and each other by building a world where everyone has a decent place to live. Here's a look back—and a look forward.

2022 ACHIEVEMENTS

GLOBAL PEOPLE SERVED

51M+

SINCE 1976

12M+

FY2022

LOCAL PEOPLE SERVED

17,500

SINCE 1986

1,880

FY2022

VOLUNTEER HOURS

108K

SINCE 1986

37K+

FY2022

RESTORE POUNDS DIVERTED FROM LANDFILLS

94M

SINCE 1986

11M+

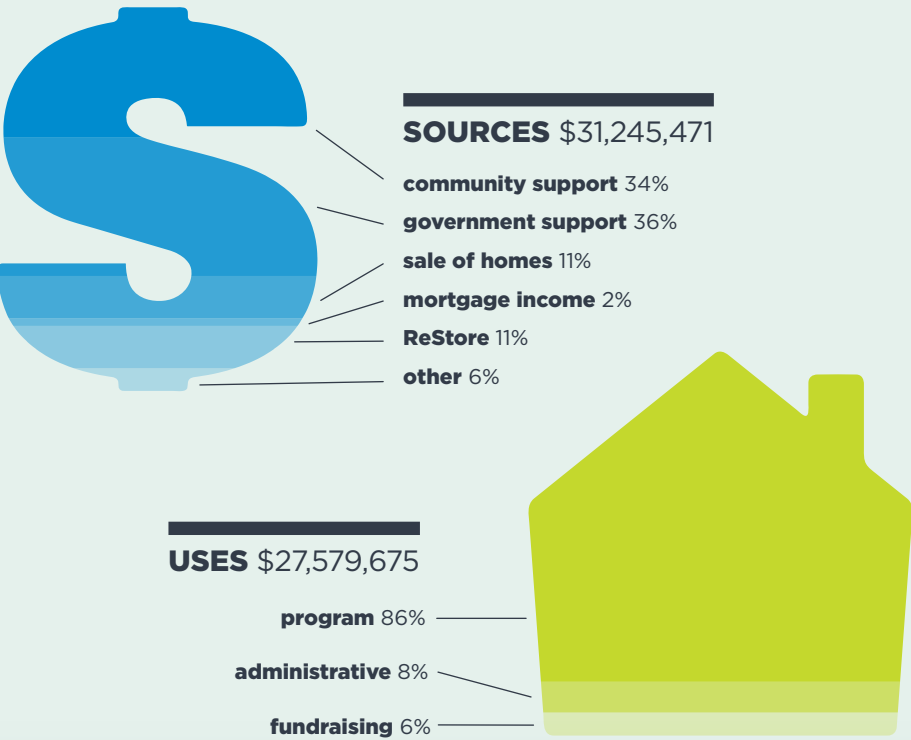
FY2022

5-YEAR PIPELINE



STATEMENT OF FUNDING

Average for the three periods FY20-FY22*



*As program uses fluctuate each year depending on the number of homes sold, a three year average is provided here.

FISCAL RESPONSIBILITY

At Habitat East Bay/Silicon Valley, we care about being responsible and effective stewards of our donors' generosity. This means we invest donor dollars intelligently, allocating only a small percentage to overhead expenses, and leveraging those gifts for maximum impact through our housing programs. We're proud to consistently earn high ratings on Charity Navigator and GuideStar, and we are recognized as a Habitat for Humanity Affiliate of Distinction.

Habitat East Bay/Silicon Valley's EIN number is 94-3053687. We are an active 501(c)(3) nonprofit in full compliance and in good standing with the IRS. Our funders include individuals, corporations, foundations, and faith organizations, and we receive grants and no-interest loans from local government sources. For more information, including our audited financial statements and our IRS Form 990s, visit HabitatEBSV.org/FiscalResponsibility.



THANK YOU DONORS

FY2022
71.21 to 6.30.22

COMPANIES & ORGANIZATIONS

\$1,000,000+ First Republic Foundation	Lafayette-Orinda Presbyterian Church Menlo School Rimini Street San Jose Sharks Foundation United Way Bay Area Wells Fargo Foundation	Southwest Airlines View Inc Western Digital Corporation Whirlpool	VMware, Inc. Winkler Real Estate Group Workday, Inc. XL Construction	Lam Research Corporation LexisNexis Liftech Lonza Biologics Luxshare-ICT Lynnewood United Methodist Church Mechanics Bank NCE NetScout Systems Inc. Nissan Omron Robotics & Safety Technologies, Inc. Piedmont Community Church Port of Oakland San Ramon Valley United Methodist Church St. Charles Borromeo Catholic Church Sustaining Arts Taylor Morrison Technology Credit Union Thrivent Choice Vanir Construction Management Inc. Vocera Communications Waldman Management Group Wilson Sonsini Goodrich & Rosati
\$500,000-\$999,999 ReStore Donors & Shoppers	\$100,000-\$249,999 First Republic Bank ICE Mortgage Technology Marathon Martinez Renewable Fuels The PG&E Corporation Foundation	\$5,000-\$9,999 AARP AssetMark AvalonBay Communities, Inc. Beam Suntory Berding & Weil LLP Buckles-Smith Electric Campos EPC CIM Group Devcon Construction, Inc. Giveback Homes Insperty Kaiser Permanente LinkedIn Logitech Lowe's MBDS Company, LLC McCarthy Building Companies, Inc. Molex National Grid Partners Netflix Premier Nutrition Prince of Peace Lutheran Church Sensiba San Filippo ServiceNow Suffolk Cares Teichert Foundation The Morrison & Foerster Foundation United Rentals	\$2,500-\$4,999 Asbury United Methodist Church Azzur Group, LLC Bethel Lutheran Church and School Charles Schwab Foundation Chevron Humankind Matching Gift Program CPM Associates D+H Construction Dominican Sisters of Oakford Element Materials Technology Equinix FPRIN LLC Grace Lutheran Church Gritstone bio, Inc. Hathaway Dinwiddie Construction Company Holy Spirit School Intel Corporation Johnson & Johnson Family of Companies Matching Gift Program KPW Structure Engineers Inc Krisite Michelini Interiors Lakeside Temple of Practical Christianity	
\$250,000-\$499,999 Cycle of Hope Riders, Donors, & Sponsors	\$50,000-\$99,999 Amazon Bank of America Charitable Foundation Patelco Credit Union Prologis Simpson Strong-Tie Company, Inc. Sobrato Philanthropies	\$10,000-\$24,999 Advantest America, Inc. Advent International Charles Schwab Bank Cisco Systems, Inc. and Foundation East Bay Community Energy Federal Home Loan Bank of San Francisco First Presbyterian Church of Berkeley Google, Inc. and Matching Gifts Intuitive Surgical, Inc. and Intuitive Foundation James Irvine Foundation John Muir Health Kiewit Corporation KLA Foundation Los Altos United Methodist Church Micron Technology Prime Electric Prometheus Philanthropic Fund Provident Credit Union Robert Bosch LLC Skanska USA Building		
\$100,000-\$249,999 First Republic Bank ICE Mortgage Technology Marathon Martinez Renewable Fuels The PG&E Corporation Foundation				
\$25,000-\$49,999 City National Bank Contra Costa Association of Realtors Kaiser Permanente - Santa Clara, San Jose and Central Coast				

INDIVIDUALS

\$500,000-\$999,999 Anonymous Trust Barbara Munster Pat Kennedy	\$25,000-\$49,999 Anonymous Fred and Sue Bockmann Daniel and Allyn Carl Marcie and John Comyns Kim and Steve Richardson ShiaoLoong Sheng	Milton and Mary Fujii Stella B. Gross Charitable Trust David and Joan Halperin John and Mary Hanlon Barbara and Bill Heil Ken Keim Christopher and Katie Knight Rose and Gary Laymon Leonard Charitable Foundation Philip Marraccini Mark Maxson and Mary Burchill Gordon and Betty Moore Geoffrey Moore Herb and Virginia Morgenthaler Victoria Osthoff Sophie Perisic Jennifer Petree Derek and Valerie Sanders Elaine Selo and Cynthia Shevel	George L. Shields Foundation, Inc. Harvey and Lillian Silbert Foundation William Walzer John and Donna Warnken-Brill Tad and Florence Yoshikawa	Ming-Teh Chen Jimmy Chow Charles and Linda Corbals Russell and Jackie Cowgill Debi Darrow Katherine Dart David Davis Sharon Devos Bob Dubow Connor and Mikila Duke Linda Eaton Sidney Ellison David and Heather Freeland Kostyantyn and Karmen Grabovskyy Marcie Gutierrez and Bret Dickey Robert Hartmann Tim and Mary Healy Michelle and Kipp Hickman William Hinsberg and Frances Houle Robert and Jacqueline Hoffman
\$100,000-\$249,999 Gary and Joy Addiego Rita L. Fisher The Estate of Marilea Larm	\$50,000-\$99,999 Anonymous The Estate of Elinor Averyt Elaine Farge Susan J. Forsythe Holly and Oscar Hartley William & Evelyn Stokes Estate Michael and Jeanette Thatcher	\$10,000-\$24,999 Anonymous (3) David Barron and Jean McClellan Kenneth Bird Peter Cardiello and Soyeon Kim Wai and Glenda Chang Elayne and Philip Dauber Nikola Filby James Forster and Joan LeMahieu	\$5,000-\$9,999 Anonymous (21) Joe Abuan Shannon and Rob Adkins Bradley Badger Ophelia Basgal and Gary Fitschen Corinne Blankenship Borch Foundation Elizabeth Bowles William and Kathleen Briggs Ralph and Donna Briskin David and Emily Casnocha Ben and Megan Cheah	

Leonard and Louiselle Holmes John Hornberger Mark and Lynne Humphrey Rangarajan and Shamala Jayaraman Karen A. Jones Hans-Theo and Jenny Jungeblut James Kelley Thomas Kim Bradford Kirby Tamara G. and Kenneth D. Kolda Kenneth Kwidzinski Lisa Lambert Karen Lassen Valerie Lee David and Rachel Metz Patsy Meyer John and Tashia Morgridge Ann and James Morrissey Mary and Andrew Moyce Linda O'Brien Les Poltrack and Alice Hausladen Jon Ransohoff and Champe Dzong Eduardo Rodriguez Justin Rubovits Astav Sacheti Vincent and Patricia Salinas Janet Schilling Gary and Elaine Schlegel Muhammad Sharaf Lois Sharp Kathleen Sharp Paul Souza Tarbell Family Foundation Porter E. & Helenmae Thompson Foundation Leonard and Carolyn Tom TOSA Foundation William Van Melle and Patricia Ho Joan Wade	Holly and Barry Walter Fred and Kate Weber David Weisman Gregory Welch Nancy A. Williams Randall Wilson Jacqueline Wnukowski Judy Wong Florence Wong Xu Zhu	Tina Declerck Dolores Delaney Mary and Bruce DeMasters Linh Do Jared Elson Shannon Fairchild The Angene Feves Trust Walter and Amy Fong Matthew Gaber Ronald and Jane Gies Peggy Green Paul Grunert Debra and John Gustafson Kathryn Haefke Melinda Harris Todd Heintz John and Sandra Heller Jeffrey Henninger John Hernandez The Manny & Cecile Hernandez Charitable Foundation Robert Hitomi Steven C. Holtzman Steven Horn Carol W. Jeans Valerie Jones Anurag Kashyap Boyd and Lisa Colburn-Boyd Lawrence and Barbara Briggs Pamela Brotherton- Sedano and Edward Sedano Richard and Johnnie Byrd Marty Lewis Harold Lipton Jean Litarowsky Rodney Loche James Lord Larry Mar Anji Maram Dorothy Marsh Carol M. Mathews John McBirney Laura and Allan McCarthy Robert and Leila McGowan Terrence and Cynthia McMahon Peter Meadow Loren Meissner Laurie Miller Tedi Mills Sherilyn Moody	Peter and Kathleen Muller Laura Murphy Stanley Ng Guy Nicholson Lena Nicolaides and Mike Von Ariel Norling Brian and Liz O'Shea Sandra Patterson and Stephen Burr Donald and Patricia Pecko George Pence Natalie and Erik Pirtle John Pollitz Kristie Potter Howard Pujol Padma and Krish Ramakrishnan Kenneth Rasler Christina Ratcliffe Jim Redovian Stephen and Beth Robie Lois Rolland Mark and Claire Sarconi Michael Scott Victoria Scudder Emily Seck George Settera Manan Shah Charles Silverman Roger and Josephine Skinner Ray Stanek Harold Steuber John and Margaret Stienstra Ravi Subramaniam Janice Susa Lenora Swan Taylor Family Trust Samuel Test Brad Titus Charles and Janet Totman Linda Van Breemen Sandra and Bill Venning Steven Weinberg and Georganne Ferrier Dan White Deborah A. Wick Wendy Wolfe and Michael Anciaux Raymond Wong Stacey Woods Timothy Wraith Jennifer Wu	Pui-Chuen Yip Nathan Yospe Bruce Young	\$1,000-\$2,499 Anonymous (64) Asghar Aboobaker ACT Memorial Charitable Fund Jon Aderhold Mukesh Advani Richard and Theresa Airaudi Clyde T. Allen Peter Aloo Richard Amarelo Rebecca Anderson Dorothy Anderson Kendra Andrews Yan Yin Ao Alan and Helen Appleford Barry and Jo Ariko Aldrian Articulo Barbara and Greg Asplund Thomas C. and Marianne Aude Gillian Aufricht Joan Baakkonen Lorrayne Bailey Joshua Baker Susan Barber Eleanor Barrett James and Lily Bassett Jason Bau John Bauman Dawn Beckman Beebe Bungalow Fund Dennis Bennett Jodie Berger Jessie Berlin Berry Giving Fund Teri Berwick Eric and Jeni Bezar Janice Biles Dona Boatright Lori Bogard and Erik Toomre Cleo Bolen Jomary and Robert Bolles Cheryl Booton and Robert Mannell Barbara F. Borthwick Hector Botello Blaine and Kristin Bowman Mari Kay Breazeale and Michael Chinn Dale Breen	Regina and Steven Bright Lois and Brian Brouillette John M. Brown John and M. Christine Brown Waltraud and Michael Buckland Mario Burata Thomas Burgei Leo Butler Jana Cain Janel Callon Lynn Candaux Lynn Candaux Carolyn and David Carpenter Robert Carpignano Gene and Patricia Carter Larry Casqueiro Stephen Cassidy and Rebecca Powlan Carlos Cevallos Simanta Chakraborty Harry Chan Constance Chan and Andrew Kucera Kimberly Chang Amy Chang Yi-Chiun Chang Desikan Chari Ravi Cherukuri Eunice M. Childs Chung Chin Debra and Jerry Chin James Choi Roy Clifton and Janet Clifton Joshua Clyne Barbara Cohen Dean Colarchik Ingrid and Robert Cole Cherida Collins Smith Brian and Janet Conery Dianne Connelly Curtis Cook Nathan Copple Richard and Sharmyn Crawford Elizabeth Crayton Pamela Curtis Douglas and Gisela Daetz Lou Dagen Robert Dair	John and Dianne Daly Christine Daniel and Cecily Peterson John E. Daniel Ronald and Elena Danielson William Danielson Donna Davies and Dennis Jespersen Kathleen Davisson Jacqueline and Zo De Muro Helen Dean Eric DeFriez Tracy Dennis and Gina Roberts The Depolo Foundation Kathryn Dernham Darshna Desai Susan Devencenzi William Deyoe Alvin Dominguez Robert and Maureen Dompe Lawrence Dougherty Rebecca Dowdakin and Flora McMartin Scott Dudley Amy Dulmage Clara Dulmage Anthony Dunbar Ronald and Carol Dunn Yadira Dupre Justin Durkee James Dyer Shirley Ebbe Mary and Larry Edson Tracey Edwards Terry and James Eichel Frank Eiras Susan Elgee Eric Elting Sarah Erbay Michael and Patricia Evans Judith Fein Jomary Fein Christopher and Heidi Finan Richard and Wanda Finn Gift Fish Kenneth Fishbach Bruce and Kathleen FitzGerald Robert Flegel and Karen Hastings-Flagel	Erin and Chloe Flynn Joseph Foerstel Joel S. Forrest Scott Fortmann-Roe Robert A. Foster Kristi Fox Danielle Fraley Georgina Franco Katherine Franger Robert Frase Thomas and Kelly Fratar The Sweetland of Freedom Foundation Mary Freitas Bruce and Diane Friend Susan Fritz Andrea Frome Mary E. Furst Venkat Gandham Diane Gandy Jessica Garcia- Blenio Thomas Gardner Carolee Gearhart and Simon Rowston David Gelfand and Ellen Daniell Paul and Eleanor Gertmenian Amar Ghose Bruce and Janice Gidlund Joshua Gies Nicole Giovando Robin Glancy John Glikbarg Gopi Goda David and Diane Goldsmith Geraldine Gooner John Greene Glenn Groshans Carol and Joseph Grundfest Joseph Guillemette Tyrone Gurule Paul and MaryEllen Gustafson Deanna and David Gustavson Jerry and Joanne Haag Mary and Thomas Haak-Frendscho Randi and Louis Hackbarth Thomas Halbach Arden Hall and Cynthia Knoll	Clifford and Laura Ham Adam and Melissa Hamalian James Hamiter Peter Hanauer Philip Hanawalt William and Roxann Happ Steve and Anne Hartman Tracy Hazelton Sharon Hendee William Henderson Douglas and Carol Henton Heidi and Rick Herz James Heslin Ian Hinchliffe and Marjorie Shapiro Robert and Lynn Hinds Jerre and Nancy Hitz Joseph Hoffman Jennifer Hom and Jiang Wu Janette Hoover and Ray Olaszewski Bronwen M. Horton Carol Hoskins Cynthia and John Howmiller Jean Hsu Annette Hunter Chris Inahara Roshan Isaac Kannan Iyengar Dale and Robin Jacques Louis Jannace Kathryn and Jeffrey Janoff Karen Jaworski Janice Jensen Tyler Jensen Sandra Johnson Samuel Johnson Janet Johnson Diane Johnson Mark and Kelly Johnson Jim and May Johnston Martin Jue Denya and Thomas P. Jur Jane Kaplan and Donatello Bonato Shyam Kapur Shakira and Ramesh Karipineni Ken O'Brien and Marylou Karp	Anil Kaul Steven and Judy Kazan Roberta Kehret Dr. L. Eileen Keller and T.C. Williams Nancy Kennedy Debra and Douglas Kerr Eileen Kiesel Kieve Foundation Rosaland and Sung-Hou Kim Kenneth and Grace Kim Barbara Klein Melissa Ko Chris Koelbel Peter and Patricia Koopman Michael Koopmans Donna and William Krepick Nancy Kukkola Carolyn Lake Conrado Landicho Steve Larsen Janice and Theodore Lassagne Joseph D. Lattuada Debra Law Hermes Law Gennette Lawrence Tiep Le Vu Le Raymond and Virginia Lee Peter and Yulin Lee Janny Lee John and Malia Lehman Carole Leita AlexSandra Leslie Joanne Lin Igor Liskovets Patrick and Emily Lo Joanna Losito Carole Lowenberg Chris Lucero Rod Lum Virginia and Jim Lyons Alan Mackey Clarence Madrilejos Laura Mahanes and Steven Weissman Christopher and Kay Maitz David Margulies Corinne I. Marks Trust Leonore Marsullo Jonathan Martin	Jameison Martin and Dorothy Brown-Martin Suwipin Martono Dene Mathews Steven M. Mathews Martha Mayo Susan and Lowman McCarley Bob and Mary Ann McCleary Christine and William McClure Jonathan McCoy Neil W. and Amelia G. McDaniel Trust Hugh and Deborah McDevitt Jason McDonald Michael McGinley Robert McKee Bertha McKinley and Daniel Schickele Nootbaar Family Fund Leanne McWaters John and Sally Mearns Dirk and Nancy Mendel Howard and Diana Mendenhall Gregory Mengel Jane Metcalfe John Metzger Christopher and Lori Meyer Rodger and Laura Miller Constance and James Miller Paul Milo Matthew Miner Amanda Minnich Anthony Mitzelfelt Karan Mody Charles Moehle William Moher Christopher Moore Edward Moorhouse Elisabeth Mooring Krysta Morgenthaler and Valerie Coleman Catherine Morris David Moseley Carolyn Mueller Pinaki and Meenakshi Mukerji Edward and Kathleen Munoz Adithi and Deepak Muralidhar	Leslie Murdock and Kathleen Hall Katherine and Shawn Murphy James and Lindsey Murray John Muszynski Jennifer Mutz Susan and Paul S. Nagata George and Patricia Najarian Kendys Nam- Dolgoff Alikunju Nasar Benbuck Nason Sharon and John Nasstrom Bill Neale James Nelson Paul and Antje Newhagen Robert Nussbaum and Jennifer Puck Paul Oellerich Abbie Oey David and Kristin Ann Olnes Zachary Omohundro Eugene Onopko Louis Osternig Ruel Ostique Ted Owyang Laurie Page Nancy and Philip Park Lorraine Parmar Ira Parthi Dipak Patel Javed Patel David Patterson Madhavi Patwardhan Julie and Hugh Pearce Carlos Perez and Mary Schoen Thomas Peterson Yaelisa Petlin Joseph Piette Danelle Pitts William Pitz and Penny Johnson Jacob Plattner Janet and Scott Pollak Sydney Poyd Kimberly Probst David Rabin John Rabold Rajiv Ramaswami Katheryn Ramp Ingrid Ramsey-Plock
--	---	---	---	--	---	--	---	--	---	---	--	---

A GIVING COMMUNITY

FY2022
71.21 to
6.30.22

Thank you to the **6,909 donors** who round out our giving community, with **gifts totaling over a million dollars** each year. Every donation counts, and this year's total is an impressive **\$1,113,705!**

\$125,070

3,055 DONORS GAVE \$1-99

\$601,402

3,202 DONORS GAVE \$100-499

\$387,233

652 DONORS GAVE \$500-999

When you consider Habitat East Bay/Silicon Valley in your estate plans, your legacy creates profound change for local families. With stable, decent, and affordable housing, Habitat families build their own legacy of stability and prosperity for generations to come.

Planned Giving is a blueprint for how charitable giving plays a role in your overall financial and estate plans. It provides Habitat with lasting mission support, and can provide you with tax advantages and even lifetime income. Many of these gifts are simple to plan and cost you nothing during your lifetime.

build a lasting
LEGACY



Start a discussion with our
Planned Giving Team

HabitatEBSV.org/Legacy

Valluri and Radha Rao
Rebecca Ratcliff and
Kenneth Jones
James and Tory Rath
William Ray
Ron Raymundo
Thomas Reichardt
William Reller
Charles and Nancy
Rickett
PK Righthand Fund
Yolanda Rinaldo
Ulises Rios
Edward and
Teresa Ritelli
Marc and Lisa Roberts
Ernest and Xochitl
Roberts
Brian Robinson
Mohini Robinson
Thomas and Judith
Rognlien
Randy and Ellen Roig
Olga and Maynard
Rotermund
Andrew Rothman
Stephen Rothrock
Carolyn Roundey
John Rukavina
Mike and Susan Sabes
James Sakai
Pauline Samuelson
Roberto Sanchez
Michael Santero
Venkata Sarva
Scott Satterthwaite
Bernardo Saulo
Andrew Sauter
Dawn Schaeffer
Diane and Donald
Schinnerer

William and Nathalie
Schmicker
Kathleen and
John Schmitz
Paul Schneider
James Schneider
Leslie Schreiner and
Timothy Thor
Steven and
Elizabeth Seem
Margaret Seidel
Thomas Seiter
Dal and Virginia Sellman
Steven Selna
William Seroy
Constance Sevier
Ken Sghia-Hughes
Sushil and Dipti Shah
Jigar Shah
Merrill and Patricia
Shanks
Mark Shaw
Sunny Shetti
Kaishuu Shinozaki-
Conefrey
Diane and Branimir Sikic
Dayna and Jim Silva
Antoinette Silva
Roberta Silverstein and
Stephen Sperber
Nicholas Sinnott-
Armstrong
Sit Charitable Fund
Marci L. Smith
Nancy Smith
Jeffery Smith
Susan Smith
Sharon Smith
Jackie Snell
Leland and Marilyn
Snider

Sigrid W. Snider
Derek Snyder
Donald and Barbara
Snyder
Jeffrey Soller and
Deborah Arthur
Walter and Enoyse
Sommer
Thomas and
Barbara Soules
Thomas Spelce
Richard Spickard and
Charlotte Anderson
Helmuth and
Sigrid Spieler
Susan and Bruce
Stangeland
Marion Steeg
Michael and Janet
M. Stevenson
Catherine Stewart
Susan Stiller
Brett Stineman and
Linda Larkin
Richard Storrs
Eric Struik
Susan and William
Studier
Jack and Mary Suite
The Shreelata
Suresh and Suresh
Chandrasekaran
Charitable Fund
Teri Suzuki
Sarah Tabler
Bonnie Tam
Sonia Tamez and
Kenneth Whistler
Taylor Family
Charitable Fund
James Terrell

The Callisto2 Fund
The Cariño Fund
Frances M. Thomas
Mark Thompson
Richard and Kathleen
C. Thompson
Phing Thong
Thorup Living Trust
Marna J. Tippin
Denise Tom
Anne Torney
Adam Trainor
Richard and
Carolyn Treakle
Rolando and
Teresa Trevino
Lisa Tsai
Mark and Kathryn
Tucker
Robert and Jean
H. Tucker
Annette Tumolo
Urban Foundation IV
Virginia Vadnais
Andres Valencia
Megan Vasey
Janice Vaughn
Tod and Jennifer
Vedock
Phillip Verne
Srinivasa Vetsa
Greg Vogel
Laura D. Von
Hacht Mattos
Leslie and Ed Wagstaff
Katharine Wallace
Jackie Walts
Sean Wang
Thomas Warner
Stephen Watkins
David Weaver

James Weber
Marsha Weintraub
Jon Welch
Debra Werner
Steven and Meredith
Westfall
Robert and Lisa
Wheatley
Noah Wiener
Judith Wilcher
Craig Wildman
John Wilkes
Steven Willenborg
Deborah Williams and
Jean Luc Laminette
Connie Williams
Jennifer Willis
Donna Wills
Wilson Family
Giving Fund
H. Leabah Winter
Frances Wise
Beverly Witham
Stefan Wolf
Daniel Wondimu
Susan Woo
Geoffrey Wood
Jeff Worrall
Melba Wu
Ping Wu
Marian and Daniel
Yamashita
Christine Young
Patience Young
Robert Yu
Brittany Zbin
Cyril Zeller
Carlos Zuniga
Olivier Zyngier

COMMUNITY PARTNERS

FY2022
71.21 to
6,30.22

top volunteers

1000+ Hours
Richard Airaudi

500-999 Hours
Deana Rinehart
Nick Stoughton

250-499 Hours
Alfonso Basulto Jr
Jose Chinchilla
Julio Hidalgo

Giulia Hill
Ted Owyang
Pheobe Panyako
Raymond Taketa
Jose Urista
Jonathan Walker

100-249 Hours
Donald Brownson
Debra Cassidy
Rodney English

Laura Goderez
Mike Heller
Balesca Hernandez
Elena Hopkins
Steve Johnson
Thierry Kamdem
Bradford Kirby
John Laettner
Eric Larsen
Becky LoDolce
Mery Lopez

Erik Lopez
Lazarus Mancheno
Kristoffer Mayfield
Christine Mitroff
Ken O'Brien
Brian O'Shea
Jose Osuna
John Ralls
Dennis Rothhaar
George Sadtler
Stephen Sattel

Mark Schoenrock
Neilay Shahi
Marc Smith
Leonard Tom
Mark Trilevsky
Robert Van Den Berg
Franklyn Washington
Robert Wright
Robert Yu
Liam Yung

restore donors

COMPANIES & ORGANIZATIONS

\$300,000+
Lowe's

\$200,000+
Best Price Mattress

\$50,000-\$99,999
Global Furniture
Group
Home Consignment
Center
InstallNET
The Local Flea
Tilshop

\$25,000-\$49,999
AA Cabinets &
Stone Supply
Article
Viamonte Senior
Living

\$10,000-\$24,999
Accent Building
Materials
Anderson
Commercial
Flooring
Cal Coast Window
and Door
Chef Kitch Online
Cle Tile
Ethan Allen
Fashion Furniture
Floor and Decor —
Milpitas
FloorFound
Green Waste Carpet
Recycling
Gregory Kemper
HD Supply
Jayant Patel
LEDone

Porven, Ltd.
Springline
Taymor
Trumark Homes
VMware
Wayfair
WHCI Plumbing
Supply Company

\$5,000-\$9,999
AKDO Pacific, LLC
Bayview Services,
Inc.
Chocolate Heaven
CSU East Bay
D.R. Horton
Janco, Inc.
KZ Kitchen Cabinet
& Stone
Lowe's - Fremont
Made Renovation

MIR Mosaic
MSI Surfaces
Oliver Space
Outdoor Supply
Hardware
Pella Door &
Window
Pottery Barn Kids
Restoration
Hardware
Sincere Home Decor
St. George
Spirits, Inc.
Stumbaugh &
Associates
Walmart

\$2,500-\$4,999
Advantage Moving
and Storage
Airbnb

Alamo Ace
Hardware
Alpha Flight Guru
Arizona Tile
Berkeley Repertory
Theatre
Bread & Butter
California Window &
Fireplace
Ceva Logistics
Cocola, Inc.
Crate & Barrel
Excolo Construction
Services, Inc.
Hotel Citrine Palo
Alto
Infoblox
Moran Supply
Nelco
NetApp
Peak Projects

People Against
Dirty
Rejuvenation
Simon Yu
Sublime
Woodworking
Thorson Tile
& Stone Inc.
Tiempo
Interiors, Inc.
Triad Project
Management, LLC
Vincent Smith, LLC
VTPro Design
WeWork

Vince Salinas, Chair
Vice President, Home
Loans, Patelco Credit
Union

**Shannon Adkins,
Vice Chair**
Managing Director,
Accenture

**Brian O'Shea,
Secretary**
Senior Access Strategy
Leader, Genentech

**Carolyn Carpenter,
Treasurer**
Account Relationship
Director, KPMG
(retired)

**Nina Lualdi,
Member at Large**
Advisor, Interim CEO,
Portfolio of Social
Enterprises

**Les Poltrack,
Member at Large**
President, Intineo LLC

Chris Boyd
SVP, Area Manager,
Kaiser Permanente,
Diablo Service Area

John Byrd
Examining Manager,
Federal Reserve Bank
of San Francisco

Gary Fitschen
Consultant, Fitschen
Design Consulting

Joseph Forline
Senior Vice President,
Gas Operations, Pacific
Gas and Electric
Company

Rosana Han
Senior Vice President,
Head of Community
Reinvestment, First
Republic Bank

David E. Harris
Attorney, Doyle &
Harris, PC

Annie Kao
Vice President,
Engineering, Simpson
Strong-Tie

Gary Kershner
Attorney, Law Offices
of Gary R. Kershner

Shail Khiyara
Founder, VOCAL
Council; President &
COO, Turbotic

Laura McCarthy
Realtor, Compass

Rodger Miller
Manager, Planning
& Development,
Taylor Morrison

Jonas Moe
Senior Vice President,
Marketing & Market
Strategy, ICE Mortgage
Technology

Zeeshan Mokarim
Global Head of
Strategy - Supply
Chain, Google

Lena Nicolaidides
Senior Vice President
and General Manager
LS-SWIFT, KLA

INDIVIDUALS

\$10,000-\$24,999
Lewis Liu
Jeffrey Siegel

\$5,000-\$9,999
Prakash Agarwal
Jane Côté-Cook
Stacy Jorgensen
Michael McConnell
Sarathy
Sribhashyam

\$2,500-\$4,999
Joshua Adams
Amy Alden
Jeff Anderson
Nicolas Bories
Susan Brooksbank
Darrah Brown
Dan Busath
Esteban Chavez
Mike Comstock

Julie Farley
Jan Fellerman
Beth Geller
Karen Gibson
Israel Gonzalez
Shailesh Govande
Joyce Hsu
Richard K
Humphries
Jennifer Isaacs

Mohammad
Javanbakht
Ben Kolin
Conner Mahan
Kristina McMillan
Margret Mendenhall
Scott Nesmith
Nanette O'Brien
Celeste Pacelli
Radfan Qaraah

Sahyeh Riopelle
Regina Rogy
Carol Rossiter
Katie Rottier
Kurt Schroeder
Teny Shapiro
Jeffrey Siegel
Sue Stern
Paul Teixeira
Dana Vargas-Lurie

Melinda Wagner
Michael Waller
Olivia
Westmoreland
Homa Yazdani
Erika Young

State of California

Affordable Housing
and Sustainable
Communities Program
CalHome Program
California Strategic
Growth Council

Department of Housing
and Community
Development (HCD)
Department of
Housing and Urban
Development (HUD)

Counties & Municipalities

Alameda County
City of Alameda
City of Antioch
City of Berkeley
City of Concord
City of Fremont
City of Hayward
City of Livermore
City of Oakland

City of Milpitas
City of Pleasant Hill
City of Pleasanton
City of San Jose
City of San Leandro
City of Santa Clara
City of Walnut Creek
Contra Costa County
Santa Clara County

Financial Partners

First Republic Bank
Heritage Bank of
Commerce
Patelco Credit Union



HABITAT FOR HUMANITY EAST BAY/SILICON VALLEY

We believe that everyone deserves a decent place to live. By creating, preserving, and expanding access to affordable housing, we provide families with the opportunity to transform their lives, gaining the strength, stability, and self-reliance they need to build a better future.

Our innovative model builds partnerships with families who contribute sweat equity, volunteers who give their time, and donors who contribute financially. We reinvest mortgage payments and leverage donor dollars to maximize our impact. Families gain economic stability and build a foundation for the future—for themselves, their children, and generations to come.



Habitat for Humanity®

East Bay/Silicon Valley

EAST BAY 2619 Broadway, Oakland, CA 94612

SILICON VALLEY 513 Valley Way, Milpitas, CA 95035

866.450.4432 | HabitatEBSV.org | [@HabitatEBSV](https://www.instagram.com/HabitatEBSV)